



HOLLOWAY
ILIFFE &
MITCHELL

Investment
FOR SALE



182 Kingston Road, Portsmouth, PO2 7LP

Fully Let Mixed Use Investment

Summary

Tenure	For Sale
Available Size	1,143 sq ft / 106.19 sq m
Price	Offers in the region of £295,000
Service Charge	N/A
Rateable Value	£4,350 Source - VOA
EPC Rating	D (100)

Key Points

- Prominent Roadside Property
- Secure Investment
- Established Retail Location



hi-m.co.uk

PORTSMOUTH 023 9237 7800

SOUTHAMPTON 023 8011 9977

Description

Rare freehold available in a popular retail parade. The property is a mid terrace two storey building with the ground floor being let to a take-away food business and the first floor let as a two bedroom flat.

The ground floor take-away comprises a sales area / reception, rear preparation room and two kitchen areas with access to the rear. The first floor flat is accessed via a separate pedestrian access off the main pavement and comprises two double bedrooms, kitchen, and bathroom comprising w.c, wash hand basin, bath with shower. The flat has gas heating throughout and has the benefit of use of the rear garden.

Location

North End is a suburban shopping area located within the City of Portsmouth serving the heavily populated catchment population in the northern district of the City. The property is situated on the East Side of Kingston Road approximately 200m to the south of its junction with Kingston Crescent which leads to the M275.

Accommodation

The accommodation comprises the following areas:

Name	sq ft	sq m	Availability
Ground - Commercial Take-Away	555	51.56	Available
1st - Residential	588	54.63	Available
Total	1,143	106.19	

Terms

The Freehold is available at price of £295,000 subject to the following lease:

Whole property let on a 20 year lease from 26th October 2005 until 25th October 2025 at a passing rent of £10,640 per annum.

Business Rates

Ground Floor Shop - Rateable Value £4,350 (Source: VOA, Gov.uk)

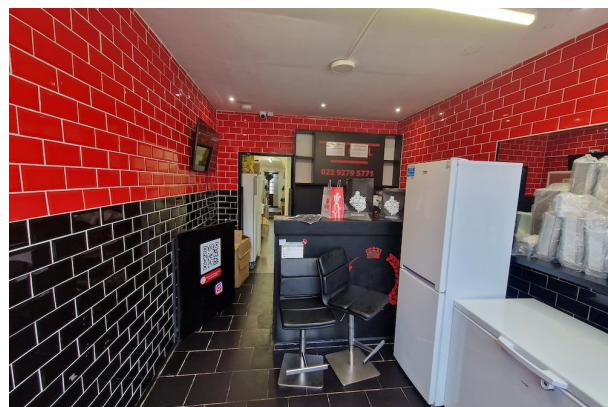
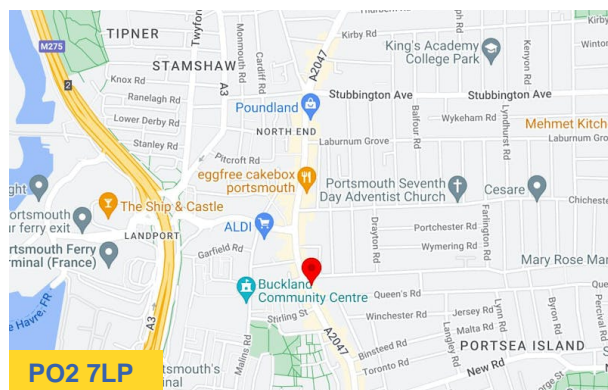
You are advised to check the rates payable with the local council before making a commitment.

First Floor Flat - Council Tax Band A (Source - Portsmouth City Council, via Gov.uk)

Other Costs

Legal Costs - Each party to bear their own legal costs incurred in the transaction.

VAT - not elected



Viewing & Further Information

James West

02392 377800 | 07415438230

James@hi-m.co.uk

More properties like this at www.hi-m.co.uk



For the Lessors or Vendors of this instruction, whose Agents they are, give notice that; These particulars are set out as general guidance only to intending Purchasers or Lessees, and do not constitute any part of an offer or contract. Details are given without any responsibility and any intending Lessees, Purchasers or Third Parties should not rely on them as statements or representations of fact, but must satisfy themselves by inspection or otherwise as to the correctness of each of them. No person in the employment of Holloway Iliffe & Mitchell has any authority to make any representation or warranty whatsoever in relation to this property. Unless stated, all prices and rents are quoted exclusive of VAT Generated on 26/09/2023

